



**Erik's Downhill Ski  
and Snowboard Lease  
Return Guidelines**

# TOPSHEET



## Normal wear and use\*

No repair required.

\*Minor scratches or nicks not penetrating topsheet.



## Excessive wear and use\*

Repair needed. Insurance would cover repair costs.

\*Scratches, nicks, or cuts that require repair.

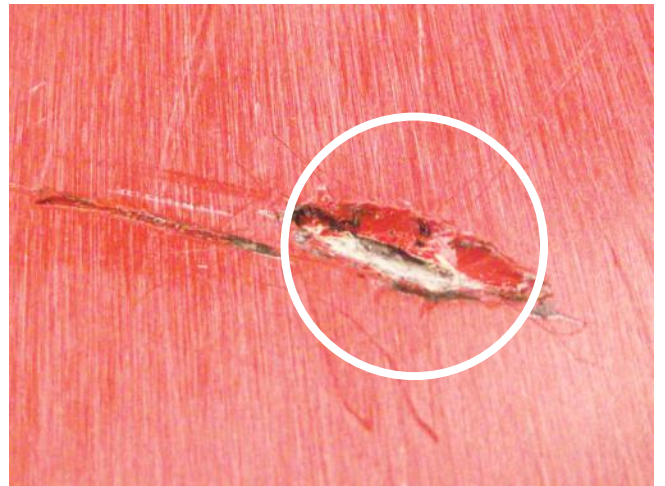
# BASE



## Normal wear and use\*

No repair required.

\*Scratches/gouges less than 1/4 inch wide, and must not penetrate to the core.



## Excessive wear and use\*

Repair needed. Insurance would cover repair costs.

\*Scratches/gouges more than 1/4 inch wide and/or penetrate to the core of the base.

# EDGE



## Normal wear and use\*

No repair required.

\*Edges must be intact, may have scratches or minor nicks, and have some surface rust.



## Excessive wear and use\*

Repair needed. Insurance would cover repair costs.

\*Broken or pulled out edges that are separated from ski or snowboard, major nicks, or edges have severe rust causing pits.

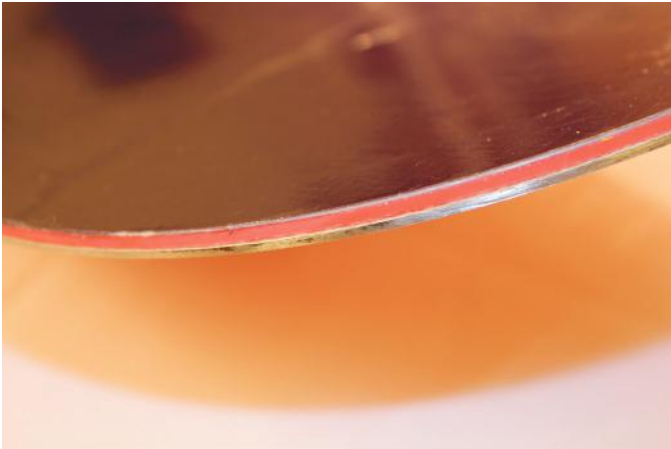
# NON SNOW ARTIFICIAL SURFACES



**Lease equipment is not be used on any non snow artificial surfaces.**

Any damage due to use on non snow artificial surfaces will result in full payment for the replacement of the skis or snowboard.

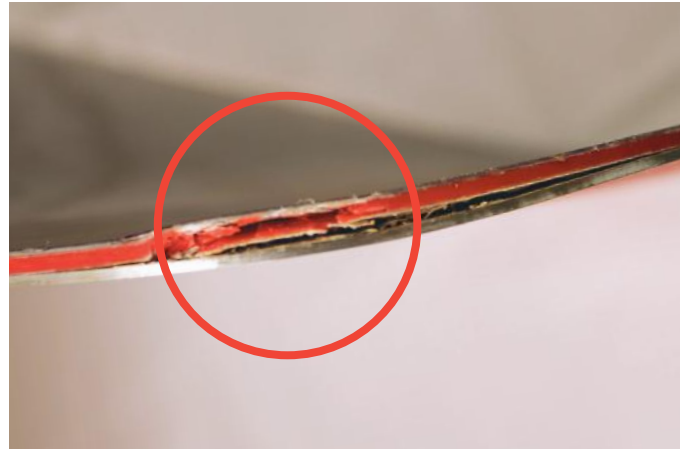
# SIDEWALL/TIP



## Normal wear and use\*

No repair required.

\*Sidewall, tip, or tail, may have superficial marks.

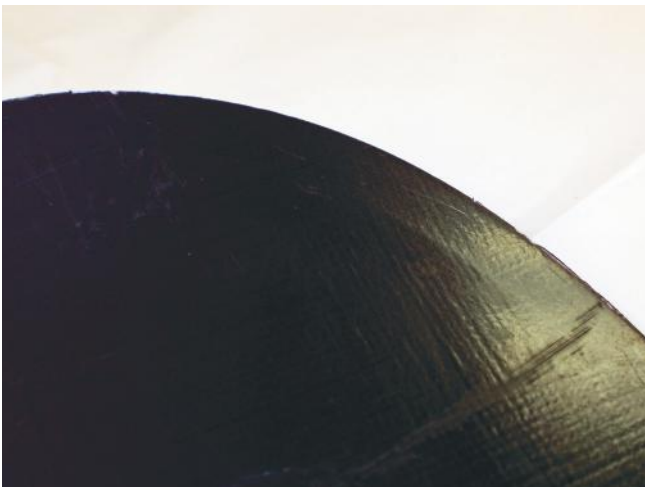


## Excessive wear and use\*

Repair needed. Insurance would cover repair costs.

\*Sidewall, tip, or tail, has been cut, separated, or otherwise damaged.

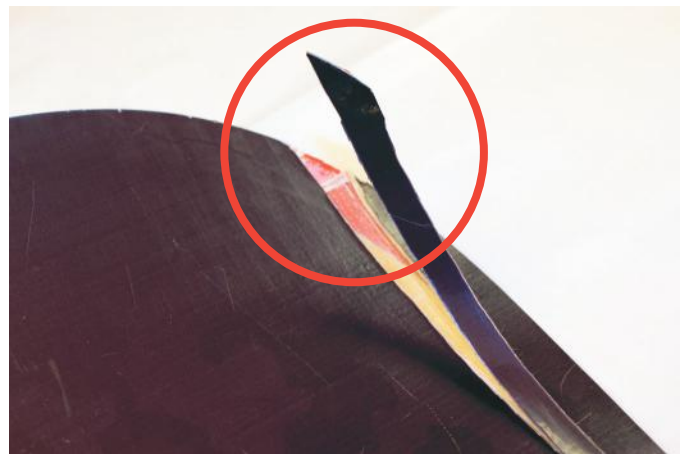
# DELAMINATION



## Normal wear and use\*

No repair required.

\*Snowboard or ski layers are not separating, minor scratches or nicks do not penetrate core.



## Excessive wear and use\*

Repair needed. Insurance would cover repair costs.

\*Snowboard or ski layers are separated and can be repaired.

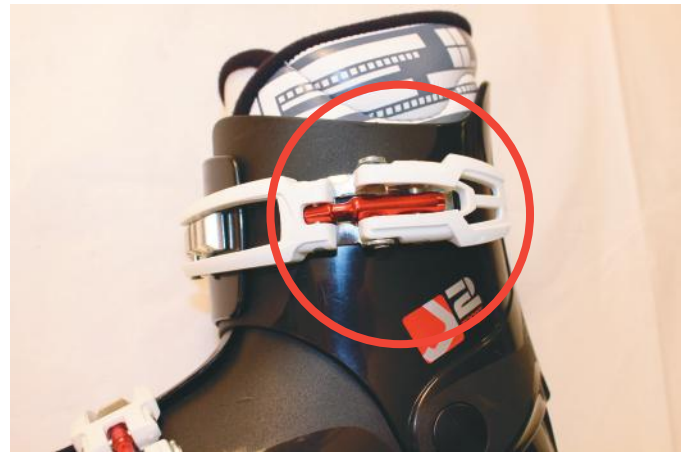
# SKI BOOTS



## Normal wear and use\*

No repair required.

\*Minor scuffs, all buckles in workable condition.



## Buckle Damage / Ripped Liners Excessive wear and use\*

Repair needed. Insurance would cover repair costs.

\*Broken buckles and/or ripped liners.

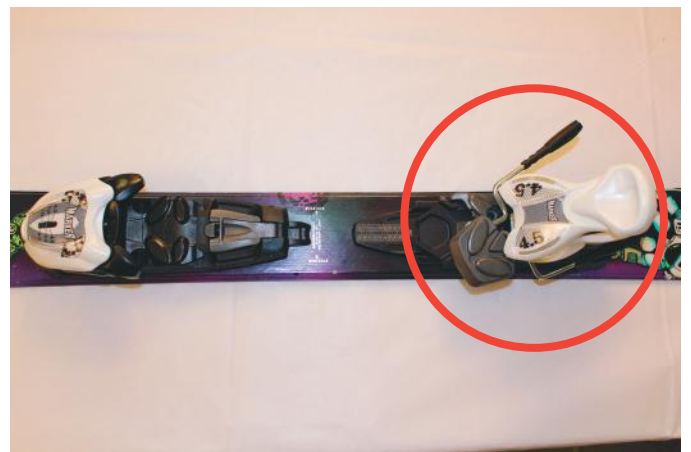
# SKI BINDINGS



## Normal wear and use\*

No repair required.

\*Binding operational with minor cosmetic blemishes.



## Excessive wear and use\*

Repair needed. Insurance would cover repair costs.

\*Missing parts, broken, or binding not functioning.



# SNOWBOARD BOOTS



## Normal wear and use\*

No repair required.

\*Minor scuffs, laces and boa system intact.



## Excessive wear and use\*

Repair needed. Insurance would cover repair costs.

\*Missing parts, boa or boa laces not operational or missing.

# SNOWBOARD BINDINGS



## Normal wear and use\*

No repair required.

\*Scuffs, or scratches that do not affect binding operation, and all parts are in working condition.



## Excessive wear and use\*

Repair needed. Insurance would cover repair costs.

\*Broken ladder straps, buckles, or missing parts.

# UNREPAIRABLE DAMAGE



## **Excessive wear and use\***

Unrepairable damage.

\*Lessee will be financially liable for the damaged lease equipment.

## **Lease insurance is available for a small fee.**

Lease insurance will cover any repairable damage during the product lease term.

Lease insurance does not cover unrepairable damage or equipment loss.

**Please ask an Erik's Bike & Board sales associate for additional details.**